



arexpo
URBAN INNOVATION

from EXPO 2015 to MIND MILANO INNOVATION DISTRICT

A NEW MODEL OF URBAN REGENERATION



THE POST-EXPO MISSION

- **LEVERAGE** the international legacy of EXPO
- **POSITION** Milan as a city that attracts talents, businesses, and capital from all over the world
- **ACHIEVE** urban regeneration centring on wellness objectives for people and the planet
- **VALORIZE** an Arexpo **public** asset (MEF, Lombardy, Milan)

THE MIND CASE AT EXPO DUBAI 2020: A BEST PRACTICE FOR POST-MEGA EVENT REGENERATION



WEF 2023



GIANCARLO GIORGETTI – MINISTER OF ECONOMY AND FINANCE INSTITUTIONAL ADDRESS AT THE MIND ANNUAL REPORT 2024



UN: MIND AS A MODEL OF PUBLIC-PRIVATE PARTNERSHIP



MEETING WITH PRESIDENT OF THE REPUBLIC SERGIO MATTARELLA FEBRUARY 2025



VISIT BY EUROPEAN COMMISSIONER PIOTR SERAFIN



THE QUADRUPLE HELIX MODEL OF INNOVATION

FUTURE OF HEALTH

life science

pharma

agri-food

biotech

advanced manufacturing

medical devices

CITY OF THE FUTURE

mobility

communication

energy

proptech

QUALITY OF LIFE

social impact

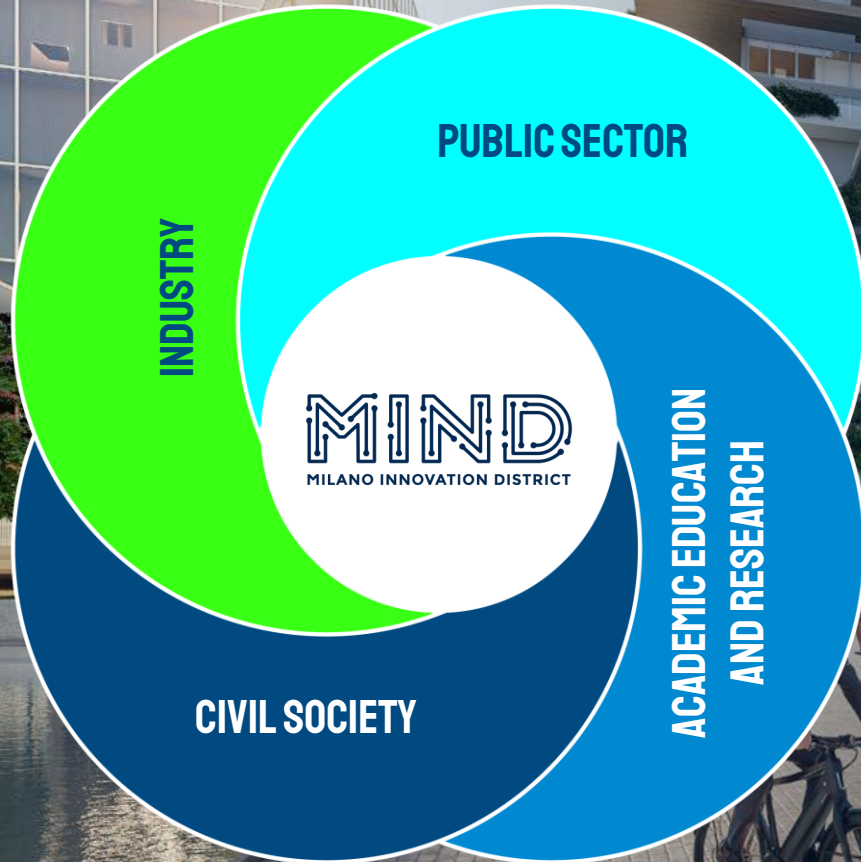
sustainability

wellbeing & sport

culture & entertainment

safety & security

4P: Personalized preventative participatory and predictive medicine





A STRONG PUBLIC LEADERSHIP

- A strong vision for territories and communities
- Urbanistic / Admin risk owner
- Development pace keeper
- International / National relationships builder
- Community engagement ownership (inside-outside)
- MIND co-service provider
- Strategic committee founder



PUBLIC ANCHORS

- A long-term commitment and investment
- Ability of producing talents and attracting private investments
- Research centers at different stages, top level in Italy and Europe
- A service for the local community



PRIVATE PARTNER

- A long-term commitment and investment
- Accountability
- Financial and Industrial risk co-owner
- Ability of execute and implement the vision in a faster way
- MIND co-service provider
- Strategic committee founder



UNIVERSITÀ
DEGLI STUDI
DI MILANO



A new scientific campus that will host over 18,000 students and more than 1,000 academics and researchers, meeting the highest international standards and with advanced research infrastructure. UniMI is currently the top Italian university in life sciences and, according to the QS WUR 2020 ranking, is 36th globally in Pharmacy and Pharmacology. 89 research projects funded by Horizon 2020 and 35 projects funded by the European Research Council (ERC).



I.R.C.C.S. Istituto
Ortopedico Galeazzi
Gruppo San Donato



Its mission is to bring together the orthopaedic excellence of IRCCS Galeazzi and the expertise in the cardio-thoracic-vascular and bariatric fields of Istituto Clinico Sant'Ambrogio. Project: 600 beds, 5000 outpatients, 700 doctors, 1100 nurses, 500 researchers, up to 9000 patients.



The new Italian research centre dedicated to life sciences.

Human Technopole's mission is to improve human health and well-being through an interdisciplinary approach based on the creation and sharing of knowledge and the promotion of innovation. 5 research centres are already operational, and the campus, consisting of 7 buildings, will be completed by 2028.



Fondazione
Triulza



Fondazione Triulza is the network of the 69 main Italian organizations of the Third Sector and Civil Economy, remaining active in MIND since Expo Milano 2015. Strategic and operational objectives of Fondazione Triulza: Community Engagement - involving People and Territories in the design and development of the site - and Social Innovation _ Social TECH - involving companies and networks of the Third Sector in MIND for the innovation and growth of social cooperatives and start-ups.

PUBLIC PARTNER



**STRONG STRATEGIC VISION AND
SOLID EFFICIENT MANAGEMENT SKILLS**



PRIVATE PARTNER



**RELIABILITY IN DELIVERING LARGE SCALE
URBAN REGENERATION PROJECTS**

A GLOBAL MARKET TO REPLICATE AND SCALE SUCCESSFUL INNOVATIONS

100bn Au\$ Global development pipeline



**PUBLIC-PRIVATE PARTNERSHIP THE
ENGINE OF THE INNOVATION DISTRICT**

**99 years concession | 1mln sqm
4.5bn investment | 70k people/day**

MIND MILANO INNOVATION DISTRICT



MIND
MILANO INNOVATION DISTRICT



TOTAL AREA: 1,000,000 SQM

PARKS: 340,000 SQM

INVESTMENTS: 5 BILLION €

2025: 30% DONE (10.000 PEOPLE / DAY

PUBLIC ANCHORS



STATE-OWNED COMPANY
MIND PROJECT LEADER



RESEARCH AND TREATMENT HOSPITAL
600 BEDS / 9,000 PEOPLE PER DAY



UNIVERSITÀ DEGLI STUDI
DI MILANO

SCIENCE FACULTY CAMPUS
18,000 STUDENTS / 2,000 RESEARCHERS



LAB HUB FOR SOCIAL INNOVATION
NETWORK OF 68 ORGANISATIONS



RESEARCH INSTITUTE FOR LIFE SCIENCE
400 RESEARCHERS



FOUNDATION INNOVATION
AND TECHNOLOGY TRANSFER

TECHNOLOGY TRANSFER FOUNDATION
A NETWORK OF 2,600 RESEARCHERS

PRIVATE COMPANIES / TENANTS



INTERNATIONAL POSITIONING



CANADA: Québec Innovation Zones | **USA:** Ann Arbor Spark Michigan University | **UNITED KINGDOM:** White City Innovation District | **SWITZERLAND:** Innovation Park | **SERBIA:** NTP Novi Sad | **KENYA:** Konza Technopolis | **JAPAN:** Kyoto Research Park | **CHINA:** Tuspark Tsinghua University



Following the principle that much of a city's health comes from **the vibrancy of its public space**, the project proposes a **Common Ground** animated by a lively mix of plazas, pedestrian areas, shared vegetable gardens, laboratories and retail facilities.

People can seamlessly move between public and private spaces or open and secluded areas.

SOCIAL INNOVATION CAMPUS



PROGRAMME 2I2I (MIND – BOLLATE PRISON)



PARKS / DOCKS



THE CATHOLIC CHURCH IN MIND



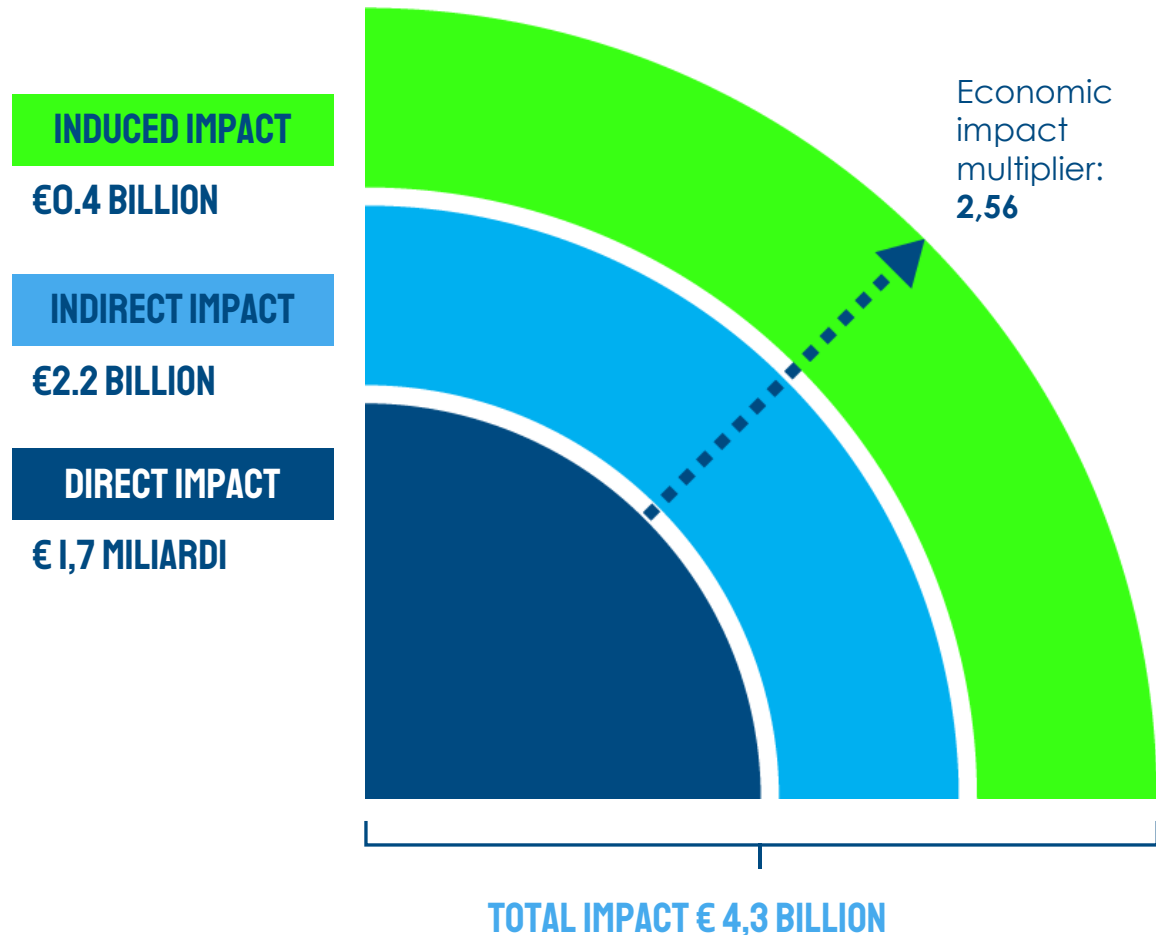


1+1=>2

A CHALLENGE MET: WHAT VALUE HAS ALREADY BEEN CREATED FOR THE COUNTRY?

12

THE RESOURCES ALREADY INVESTED IN THE DEVELOPMENT OF MIND HAVE GENERATED AN ECONOMIC IMPACT OF €4.3 BILLION



ECONOMIC IMPACT OF THE CONSTRUCTION PHASE:

€ 4,3 MILIARDI

ECONOMIC IMPACT MULTIPLIER:

2,56

For every euro of economic activity generated directly by the construction of the facilities, an additional €1.56 has been activated within the economy.

Proprietary model developed by TEHA Group based on Arexpo, Lendlease and other sources, 2025

THE IMPACT OF MIND ON LOMBARDY'S AND ITALY'S GDP GROWTH (2025–2032)

3%

LOMBARDY



1,7%

ITALY



FROM MIND, A MODEL OF TERRITORIAL INDUSTRIAL ECONOMIC POLICY IS BORN — TO BE REPLICATED ACROSS THE COUNTRY





THANK YOU FOR YOUR ATTENTION



IGOR DE BIASIO

CEO

igor.debiasio@arexpo.it

arexpo.it